

Order no.: 011253

Single-sided ML stepladder, anodised aluminium



Number of steps

- 3
- 4
- 5

Specification

Working height 2.7 m	Step design Steps	Number of steps/rungs 3 steps	Platform included as step Yes	Step depth 80 mm
Step/Rung distance 235 mm	Type of non-slip protection Aluminium corrugated	Height 1.31 m	Platform height 690 mm	Base spread 680 mm
Inclination 70 °	Lower outer width 460 mm	Max. load capacity 150 kg	Design type Freestanding Single-sided access	Weight 4.9 kg
Transport dimensions 1390 x 455 x 125 mm, 4.9 kg	Business division MUNK Günzburger Steigtechnik	Order no. 011253	Price € 207.00	

Facts

- Stepladder made of aluminium
- Ergonomically shaped ladder side-rails for easy handling
- 80 mm deep grooved steps and large platform
- High-strength bolted step-to-side-rail connection
- Conical side-rail guide for safe stance
- 4-fold riveted ladder joint made of aluminium
- Non-slip ladder shoes
- Practical storage tray
- From six steps or more: Spreader lock with two high-strength polyester straps

- Step spacing: 235 mm
- Ladder inclination: 70°
- Maximum load: 150 kg

Scope of supply

- Ladder: 1 x

Information on sustainability criteria

- Corporate certification: ISO 9001
- Corporate certification: ISO 14001
- Corporate certification: EN 1090
- Corporate certification: EcoVadis
- RoHS
- REACH
- The MUNK Group complies with a Code of Conduct
- The Supply Chain Act does not apply due to our size
- The materials used are listed in the technical specification
- Resource-saving production: own photovoltaic systems
- Energy-efficient consumption during production: LED lighting
- Repairability, durability and quality: 15-year warranty on series products made in Germany
- Recyclability: Our products are mostly made of aluminium, steel or wood and can be fed directly into the recycling process.
- Socially acceptable working conditions in production: fair wages, gender equality
- Economical and recyclable packaging: no use of polystyrene, predominantly use of wood and cardboard, small amounts of plastic
- No health hazards for the users

More product pictures



Added value

Industrial grade

Stable and robust for tough everyday working life (including 4-way edging)

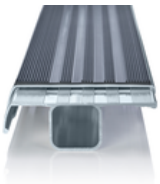
- Corrosion-resistant fixtures
- Use of high-quality and high-strength materials
- Versatile and practical accessories



clip-step step padding

Optimised and certified non-slip protection for greater comfort and safety

- Made of grooved plastic
- Exact fit and easy to clip onto the steps
- Applied up to the maximum accessible step as a visual check
- Retrofittable and available as spare part



Storage tray

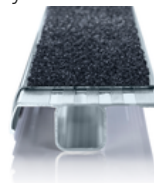
- For the practical storage of small parts
- Made from high-quality plastic
- Partly with integrated hooks and tool holders
- Different versions, depending on the ladder model



clip-step R 13 step padding

Certified non-slip protection for step ladders

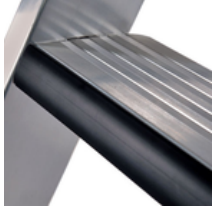
- Fulfils the requirements of the highest possible non-slip class R 13 thanks to aluminium oxide particles
- Improves work safety in wet and oil-contaminated environments
- Applied up to the maximum accessible step as a visual check
- Retrofittable, available as a spare part and also in yellow in selected lengths (RAL 1021)



relax step® step padding

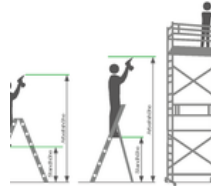
Greater comfort during prolonged periods of working on the ladder

- Worked into the leading edge of the step
- Pads the front edge of the ladder step
- Comfortable cushioning for leaning and bracing against the next step



Note: Working heights

- National regulations (e.g. TRBS 2121 Part 2 in Germany) must be complied with with regard to the maximum working height when using the ladder as a workstation.
- Information on [TRBS 2121 Part 2](#) has been summarised on our Service page
- Read our [tips and tricks](#) on how to calculate [working height](#)



Corporate certifications

on sustainability criteria



Management System
ISO 9001:2015
ISO 14001:2015

www.tuv.com
ID 9109612548



Nachhaltigkeit
EcoVadis
sustainable supply management
CSR-Rating in Silber 2022

