

Order no.: 154347

Mobile scaffolding, 0.75 × 1.80 m, with chassis bar.



Platform height [mm]

3260	4660	5780	6620	7740	8578
9700	10540				

Specification

Working height 5.26 m	Scaffolding height 5.93 m	Platform height 3.26 m	Platform width 750 mm	Platform length 1.8 m
Load capacity 2 kN/m²	Weight 128 kg	Indoor use, central installation possible & allowed	Indoor use, lateral installation possible & allowed	Outdoor use, central installation possible & allowed
Outdoor use, lateral installation possible & allowed	Ballasting of scaffolding, indoor, central installation 0 kg	Ballasting of scaffolding, indoor, lateral installation 40 kg	Ballasting of scaffolding, outdoor, central installation 60 kg	Ballasting of scaffolding, outdoor, lateral installation 140 kg
Predecessor product 154345, 170335	Business division MUNK Günzburger Steigtechnik	Order no. 154347	Price € 3,597.00	Notice Accessories necessary to fulfil DIN EN 1004-1:2021

Facts

- Mobile scaffolding made of sturdy round aluminium tubing with welded frame parts
- All scaffolding parts are also available individually as spare or extension parts
- Galvanised steel chassis bar for flexible change of working position (location/setup)
- Four Ø 200 mm swivel castors with centric load application, locking mechanisms and spindles

- Scaffolding is easily moved along the chassis bar by loosening eight screws
- Can be set up in central and lateral positions
- Aluminium toe boards and railing frames with integrated knee board as safety railing
- Installation and removal without tools from platform to platform thanks to push-fit connectors and quick-release fasteners
- Easy to handle thanks to individual lightweight parts
- Different platform lengths available (1.80 / 2.45 / 3.0 m)
- Working heights up to 12.45 m
- GS-tested as per DIN EN 1004
- Load class/scaffolding group 3: 2.0 kN/m²
- In order to meet the requirements of DIN EN 1004-1:2021, this scaffold must be retrofitted
- Option 1 - Conversion to MSG: 2 protective assembly railings telescopic (027991) are required for safe assembly, dismantling and conversion
- Option 2 - Conversion to SG: Replace the railings lengthwise with safety railings for mobile scaffoldings in the appropriate scaffold length (2 pieces per platform level). Replace the guardrail frame at the front (top platform level) with railing frame SG at the front in the appropriate width. Omit the diagonal braces above the first platform

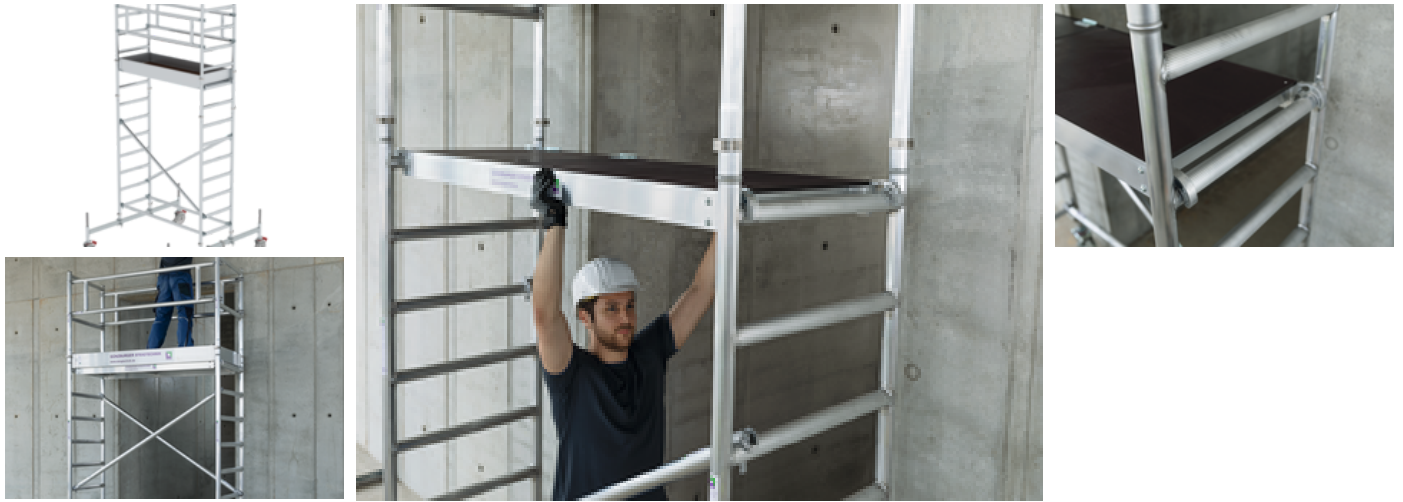
Scope of supply

- Push-fit frame, 0.75 m.: 2 x
- Push-fit frame, 0.75 m.: 2 x
- Railing lengthwise: 2 x
- Platform with trapdoor: 1 x
- Toe board front side: 2 x
- Toe board long side: 2 x
- Diagonal brace: 2 x
- Horizontal strut: 2 x
- Chassis bar: 2 x
- Swivel castor with spindle: 4 x
- Step-on bracket: 1 x
- Push-fit frame, 0.75 m.: 2 x

Information on sustainability criteria

- Corporate certification: ISO 9001
- Corporate certification: ISO 14001
- Corporate certification: EN 1090
- Corporate certification: EcoVadis
- RoHS
- REACH
- The MUNK Group complies with a Code of Conduct
- The Supply Chain Act does not apply due to our size
- The materials used are listed in the technical specification
- Resource-saving production: own photovoltaic systems
- Energy-efficient consumption during production: LED lighting
- Repairability, durability and quality: 15-year warranty on series products made in Germany
- Recyclability: Our products are mostly made of aluminium, steel or wood and can be fed directly into the recycling process.
- Socially acceptable working conditions in production: fair wages, gender equality
- Economical and recyclable packaging: no use of polystyrene, predominantly use of wood and cardboard, small amounts of plastic
- No health hazards for the users

More product pictures



Added value

Safety at heights

- Optional protective assembly railing as safety railing during installation and removal
- Installation without the need of tools, uncomplicated and easy to handle
- Railing with integrated knee board and aluminium toe boards



Highest quality

- User-friendly and robust design
- Low weight of the individual parts for easy handling
- Welded round tube frames for maximum stability
- All-round profiled rungs for safe ascent and descent



Sturdy connection

- Automatically closing scaffolding claw with sophisticated geometry for a secure connection
- Innovative spring clip for plug-on frame – no accidental loosening or losing possible
- Transverse and diagonal braces for high stability



Modular kit system

- More than 180 variants are possible by combining different individual parts
- Flexible adaptations and extensions possible at any time
- Individual parts at the original part price
- Installation and removal without tools



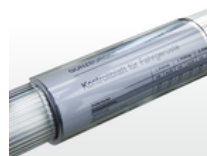
Safe standing

- Adjustable outriggers with swing base or chassis bar ensure safe working depending on model
- Easy to handle
- Additional ballast weights required depending on application



Everything at a glance

- Clip tray for clearly visible attachment of the necessary test documents to the scaffolding
- Weather and UV-resistant



Flexible basis

- Swivel castors with load centring in braked condition
- Height adjustment for level compensation
- Various sizes and designs



Expand your scaffolding with a safety railing (SG) and ensure reliable protection at work thanks to the system-integrated side protection! The retrofit reduces the risk of falling and enables the BG BAU work safety subsidy to be paid for up to 50% of the purchase costs (max. 100 euro per measure).

- ✓ Suitable for this product: Compatible SG safety railings offer effective side protection and are easy to retrofit.

All members of the BG BAU profit from this subsidy. This is intended to prevent accidents at work and improve ergonomics, especially on construction sites. All information from BG BAU can be found at:

www.bgbau.de/service/angebote/arbeitsschutzpraem

A brief overview of the subsidy and an overview of our eligible products can be found on our website at [Knowledge](#).

Corporate certifications

on sustainability criteria



Management System
ISO 9001:2015
ISO 14001:2015
www.tuv.com
ID 9108612548



Nachhaltigkeit
EcoVadis
sustainable supply management
CSR-Rating in Silber 2022

