

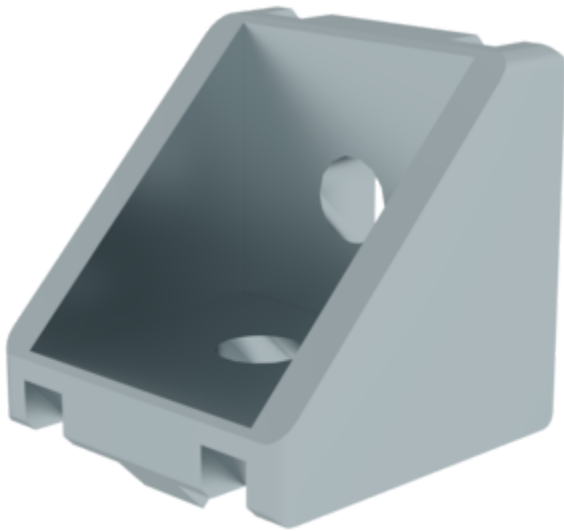
Order no.: 930207

Corner bracket 30x30 mm

Type

30x30

40x40



Specification

| | | | | |
|-------------------------------------|----------------------|----------------------|---------------------|----------------------|
| Connection type Angle connection | Material Die-cast | Weight/piece 23 g | Groove size 6 mm | Dimension A 30 mm |
| Dimension B 30 mm | Dimension C 30 mm | Dimension D 5 mm | Order no. 930207 | |

Facts

- Profile angle for profile 30
- For joining profiles to each other
- Particularly suitable for retrofitting profiles

Description

The 30x30 mm corner bracket is a profile angle that has been specially developed for profile 30. It is ideal for joining profiles to each other and is particularly suitable for retrofitting profiles. Thanks to its high-quality finish, the 30x30 mm corner bracket is particularly durable.

Scope of supply

- Corner bracket: 1 x

More product pictures

Corporate certifications

on sustainability criteria



Management System
ISO 9001:2015
ISO 14001:2015
www.tuv.com
ID 9108612548



Nachhaltigkeit
EcoVadis
sustainable supply management
CSR-Rating in Silber 2022

