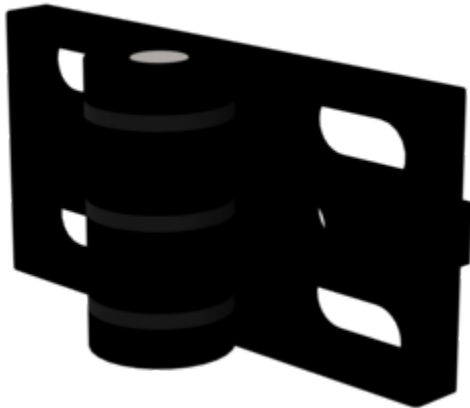


Order no.: 930609

Hinge



Specification

Material Zinc die-cast	Weight/piece 300 g	Dimension A 80 mm	Dimension B 40 mm	Dimension C 4.5 mm
Order no. 930609				

Facts

- Black powder-coated hinge
- Bright axle
- Black discs
- Note: The hinges can be adjusted horizontally and can therefore be perfectly aligned

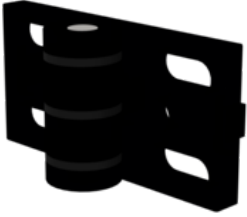
Description

The hinge is an indispensable component for doors and windows. It joins two wings to each other and allows them to move. The hinges can be adjusted horizontally and can therefore be perfectly aligned. The hinge is made from die-cast zinc and has a black powder coating.

Scope of supply

- Hinge: 1 x

More product pictures



Corporate certifications

on sustainability criteria



Management System
ISO 9001:2015
ISO 14001:2015
www.tuv.com
ID 9108612548

