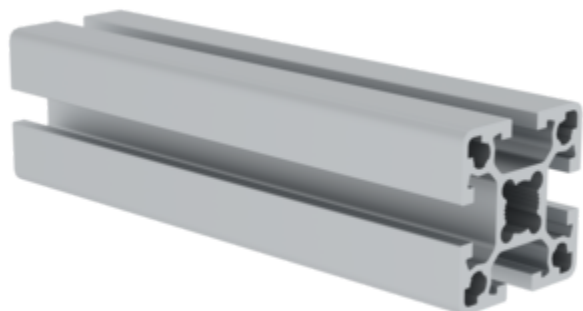


Order no.: 930102

## Aluminium profile 40x40 mm



Surface finish

Anodised aluminium

Natural aluminium

### Specification

Profile type <b>Construction profile</b>	Length max. <b>6 m</b>	Material <b>Aluminium</b>	Profile dimension X <b>40 mm</b>	Profile dimension Y <b>40 mm</b>
Weight per metre <b>1560 g/m</b>	Groove size <b>8 mm</b>	No. of grooves <b>4</b>	Ix Area moment of inertia <b>96331</b>	Iy Area moment of inertia <b>96331</b>
Cross-sectional area FL <b>573.32 mm<sup>2</sup></b>	Surface texture <b>Anodised aluminium</b>	Anodising <b>Bright E6/EV1</b>	End design <b>Sawn</b>	Core hole diameter <b>M12</b>
Order no. <b>930102</b>				

### Facts

- Construction profile made from aluminium
- Screw channel profile with T-slot
- For sturdy, versatile constructions
- Simple installation
- Versatile use
- Added visual and functional benefits

### Description

The 40x40 mm aluminium profile is the ideal sturdy construction profile for your projects. The profile is made from high-quality aluminium and has screw channels for simple installation. The profile is available in various lengths up to 6000 mm and is versatile in its use. The T-slot profile is available in anodised aluminium or natural aluminium versions.

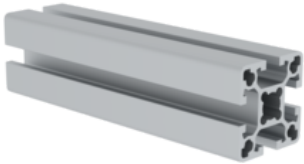
- Bright anodised
- In different lengths up to 6000 mm

### **Scope of supply**

- Aluminium profiles, sawn to the required length (max. 6 m): 1 x

### **More product pictures**

---



## Corporate certifications

---

on sustainability criteria



Management System  
ISO 9001:2015  
ISO 14001:2015  
[www.tuv.com](http://www.tuv.com)  
ID 9108612548

