



Order no.: 031310

Multi-function ladder 4-section with nivello® stabiliser



Number of rungs

2x2 + 2x3

2x3 + 2x4

4x3

4x4

Specification

Working height 4 m	Step design Rungs	Number of steps/rungs 2x2 + 2x3 rungs	Step/Rung height 30 mm	Step depth 30 mm
Step/Rung distance 280 mm	Ladder length as straight ladder 2.85 m	Ladder length as double-sided ladder 1.49 m	Base spread as double ladder 990 mm	Inclination 70 °
Height as working platform 630 mm	Length as working platform 1.4 m	Base spread as working platform 2.17 m	Outer width 350 mm	Stabiliser width 930 mm
Depth of side-rails 58 mm	Width of side-rails 25 mm	Max. load capacity 150 kg	Weight 12.5 kg	Transport dimensions 933 x 360 x 273 mm, 12.5 kg
Business division MUNK Günzburger Steigtechnik	Order no. 031310	Price € 379.00		

Facts

- Aluminium multi-function rung ladder
- Stable rectangular tube side-rails

- Rectangular rungs grooved on both sides, 30 x 30 mm
- 4-fold edged rung-to-side-rail connection
- Can be used as step and straight ladder or optionally as working platform (see accessories)
- Optimum operational safety due to six automatically locking steel hinges
- nivello® stabilisers for extra safe stance and ascent (double-sided, enclosed separately)
- Rung distance: 280 mm
- Ladder width: 350 mm
- Maximum load: 150 kg
- Note: In accordance with TRBS 2121 Part 2, a suitable accessory is required for working on this ladder
- Note: In accordance with DIN EN 131-4, a platform must also be ordered when using as a work platform (e.g. wooden surface)

Scope of supply

- Ladder: 1 x
- Stabiliser (enclosed separately): 2 x
- Instructions for use and operation: 1 x

Information on sustainability criteria

- Corporate certification: ISO 9001
- Corporate certification: ISO 14001
- Corporate certification: EN 1090
- Corporate certification: EcoVadis
- RoHS
- REACH
- The MUNK Group complies with a Code of Conduct
- The Supply Chain Act does not apply due to our size
- The materials used are listed in the technical specification

- Resource-saving production: own photovoltaic systems
- Energy-efficient consumption during production: LED lighting
- Repairability, durability and quality: 15-year warranty on series products made in Germany
- Recyclability: Our products are mostly made of aluminium, steel or wood and can be fed directly into the recycling process.
- Socially acceptable working conditions in production: fair wages, gender equality
- Economical and recyclable packaging: no use of polystyrene, predominantly use of wood and cardboard, small amounts of plastic
- No health hazards for the users

More product pictures

Added value

Industrial grade

Stable and robust for tough everyday working life (including 4-way edging)

- Corrosion-resistant fixtures
- Use of high-quality and high-strength materials
- Versatile and practical accessories



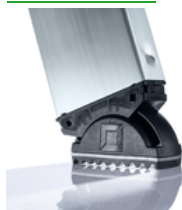
Flexibility

- Universal and versatile use
- Compact size for transport and storage
- Upper ladder can also be used individually (up to 3.0 m)



The movable ladder shoe sets new standards in stability

[Learn more](#)



Easy handling

- Insertion hooks with lift-off protection or automatically locking steel hinges
- Optimised guidance, thanks to guide fixtures with high-strength plastic coating

Large range of accessories

- The right equipment for every application
- Practical and makes work easier
- Suitable for universal use on Günzburger Steigtechnik ladders



nivello® stabiliser

Extra safe, standards-compliant ascent for straight ladders over 3.0 m

- Extra wide stabiliser for even greater stability
- nivello® ladder shoes with patented 2-axis inclination technology, integrated work angle check and exchangeable foot plates
- Individually available as spare part



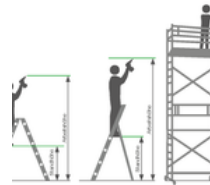
roll-bar retrofit kit

- Rolling instead of carrying: ergonomic and convenient handling
- Simple, no-drill mounting on stabilisers
- User-friendly operation without bending down




Note: Working heights

- National regulations (e.g. TRBS 2121 Part 2 in Germany) must be complied with with regard to the maximum working height when using the ladder as a workstation.
- Information on [TRBS 2121 Part 2](#) has been summarised on our Service page
- Read our [tips and tricks](#) on how to calculate [working height](#)




Certificates



17KFP2038-02 -
Test Certificate
"Bauart geprüft"

Valid in



DIN EN 131-3:2007
DIN EN 131-4:2007
PAK-
ANFORDERUNG
FÜR GS -
ABSCHNITT
3.1(PAH-
REQUIREMENT
FOR GS - CL. 3.1)
AFPS GS 2014:01
PAK
EK5/AK1 17-
03:2017
DIN EN 131-1:2016
DIN EN 131-2:2017

Corporate certifications

on sustainability criteria



Management System
ISO 9001:2015
ISO 14001:2015
www.tuv.com
ID 9108612548



Nachhaltigkeit
EcoVadis
sustainable supply management
CSR-Rating in Silber 2022

