

Order no.: 051084

Platform ladder with castors and handle



Number of steps

- 4
- 5
- 6
- 7
- 8
- 9
- 10



Specification

Working height 2.9 m	Step design Steps	Number of steps/rungs 4 steps	Platform included as step Yes	Platform height 900 mm
Step depth 80 mm	Step/Rung distance 235 mm	Height 1.65 m	Base spread 1.16 m	Inclination 70 °
Lower outer width 610 mm	Depth of side-rails 73 mm	Depth of side-rails, support 58 mm	Width of side-rails 25 mm	Castor diameter 125 mm
Max. load capacity 150 kg	Design type Freestanding Single-sided access With castors	Transport dimensions 1751 x 605 x 180 mm, 13 kg	Business division MUNK Günzburger Steigtechnik	Order no. 051084

Facts

- Platform ladder made of aluminium
- Stable rectangular tube side-rails
- Grooved steps with a depth of 80 mm
- Large, trapeze-shaped platform (400 / 360 x 425 mm)
- 4-fold edged step-to-side-rail connection

- Conical side-rail guide for safe stance
- Two handrails for safe ascent and descent (enclosed separately)
- 'safe-cap' ladder joint
- nivello® ladder shoes with patented 2-axis inclination technology
- Practical storage tray (350 x 200 mm)
- Rigid connection through metal struts detachable on both sides
- Spreader lock with two high-strength polyester straps
- Two lifting rollers Ø 125 mm and handles (supplied loose)
- Step spacing: 235 mm
- Ladder inclination: 70°
- Maximum load: 150 kg

Scope of supply

- | | |
|---------------------------------------|---|
| ■ Ladder: 1 x | ■ Lifting castors: 2 x |
| ■ Handrail (enclosed separately): 2 x | ■ Instructions for use and operation: 1 x |

Information on sustainability criteria

- Corporate certification: ISO 9001
- Corporate certification: ISO 14001
- Corporate certification: EN 1090
- Corporate certification: EcoVadis
- RoHS
- REACH
- The MUNK Group complies with a Code of Conduct
- The Supply Chain Act does not apply due to our size
- The materials used are listed in the technical specification
- Resource-saving production: own photovoltaic systems

- Energy-efficient consumption during production: LED lighting
- Repairability, durability and quality: 15-year warranty on series products made in Germany
- Recyclability: Our products are mostly made of aluminium, steel or wood and can be fed directly into the recycling process.
- Socially acceptable working conditions in production: fair wages, gender equality
- Economical and recyclable packaging: no use of polystyrene, predominantly use of wood and cardboard, small amounts of plastic
- No health hazards for the users

More product pictures



Added value

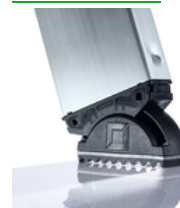
Ladder joint safe-cap

- Smooth ladder joint with large contact surface and sturdy plastic protective cap
- The 6 rivets and thicker wall thickness provide for greater stability and protection at this sensitive point on the ladder, increasing its service life
- The safe-cap protects the ladder when in use, when loading and storing, as well as the contact surfaces, walls, truck loading areas and the joint itself



The movable ladder shoe sets new standards in stability

[Learn more](#)



Certificates





25KFP0610-01 -
Test Certificate
"Bauart geprüft"

Valid in



DIN EN 131-1:2019
DIN EN 131-2:2017
DIN EN 131-3:2018
EK5/AK1 17-
02.4:2021
PAK-
ANFORDERUNG
FÜR GS (PAH
REQUIREMENT
FOR GS) AFPS GS
2019:01 PAK

Corporate certifications

Standards for quality and sustainability

