

Order no.: 041603

Double-sided stepladder with clip-step



Number of steps

2x3

2x4

2x5

2x6

2x7

2x8

2x9

2x10

2x12

2x14

Specification

| | | | | |
|--|--|-------------------------------------|--|------------------------------|
| Working height 2.2 m | Step design Steps | Number of steps/rungs 2x 3 steps | Step depth 80 mm | Step/Rung distance 235 mm |
| Type of non-slip protection clip-step | Height 670 mm | Base spread 690 mm | Inclination 70 ° | Lower outer width 440 mm |
| Depth of side-rails 73 mm | Width of side-rails 25 mm | Max. load capacity 150 kg | Design type Freestanding Double-sided access | Weight 5.28 kg |
| Transport dimensions 740 x 432 x 212 mm, 5.28 kg | Business division MUNK Günzburger Steigtechnik | Order no. 041603 | Price € 216.00 | |

Facts

- Stepladder made of aluminium
- Stable rectangular tube side-rails
- Grooved steps with a depth of 80 mm
- clip-step step padding for optimised non-slip protection
- 4-fold edged step-to-side-rail connection

- Conical side-rail guide for safe stance
- nivello® ladder shoes with patented 2-axis inclination technology
- ergo-pad® grip area with clamping mechanism
- 'safe-cap' ladder joint
- From seven steps or more: Spreader lock with two high-strength polyester straps
- Step spacing: 235 mm
- Ladder inclination: 70°
- Available with and without step padding
- Maximum load: 150 kg

Scope of supply

- Ladder: 1 x

Information on sustainability criteria

- Corporate certification: ISO 9001
- Corporate certification: ISO 14001
- Corporate certification: EN 1090
- Corporate certification: EcoVadis
- RoHS
- REACH
- The MUNK Group complies with a Code of Conduct
- The Supply Chain Act does not apply due to our size
- The materials used are listed in the technical specification
- Resource-saving production: own photovoltaic systems
- Energy-efficient consumption during production: LED lighting
- Repairability, durability and quality: 15-year warranty on series products made in Germany
- Recyclability: Our products are mostly made of aluminium, steel or wood and can be fed directly into the recycling process.
- Socially acceptable working conditions in production: fair wages, gender equality

- Economical and recyclable packaging: no use of polystyrene, predominantly use of wood and cardboard, small amounts of plastic
- No health hazards for the users

More product pictures

Added value

Industrial grade

Stable and robust for tough everyday working life (including 4-way edging)

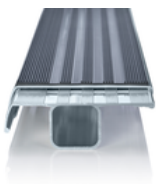
- Corrosion-resistant fixtures
- Use of high-quality and high-strength materials
- Versatile and practical accessories



clip-step step padding

Optimised and certified non-slip protection for greater comfort and safety

- Made of grooved plastic
- Exact fit and easy to clip onto the steps
- Applied up to the maximum accessible step as a visual check
- Retrofittable and available as spare part



The movable ladder shoe sets new standards in stability

[Learn more](#)



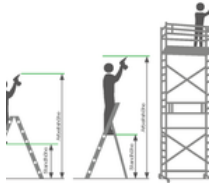
ergo-pad® grip area

For easier and more ergonomic handling at the optimum carrying point



Note: Working heights

- National regulations (e.g. TRBS 2121 Part 2 in Germany) must be complied with with regard to the maximum working height when using the ladder as a workstation.
- Information on [TRBS 2121 Part 2](#) has been summarised on our Service page
- Read our [tips and tricks](#) on how to calculate [working height](#)




Certificates



17KFP0690-05 -
Test Certificate
"Bauart geprüft"

Valid in



DIN EN 131-1:2007
EK5-AK1 17-
02:2017
DIN EN 131-1:2016
DIN EN 131-2:2017
PAK-
ANFORDERUNG
FÜR GS -
ABSCHNITT
3.1(PAH-
REQUIREMENT
FOR GS - CL. 3.1)
AFPS GS 2014:01
PAK

Corporate certifications

on sustainability criteria



Management System
ISO 9001:2015
ISO 14001:2015
www.tuv.com
ID 9108612548



Nachhaltigkeit
EcoVadis
sustainable supply management
CSR-Rating in Silber 2022

