

Order no.: 050084

Platform ladder



Number of steps

- 4
- 5
- 6
- 7
- 8
- 9
- 10

Specification

Working height 2.9 m	Step design Steps	Number of steps/rungs 4 steps	Platform included as step Yes	Platform height 900 mm
Step depth 80 mm	Step/Rung distance 235 mm	Height 1.65 m	Base spread 1 m	Inclination 70 °
Lower outer width 610 mm	Depth of side-rails 73 mm	Depth of side-rails, support 58 mm	Width of side-rails 25 mm	Max. load capacity 150 kg
Design type Freestanding Single-sided access	Weight 10.2 kg	Transport dimensions 1752 x 605 x 164 mm, 10 kg	Business division MUNK Günzburger Steigtechnik	Order no. 050084
Price € 475.00				

Facts

- Platform ladder made of aluminium
- Stable rectangular tube side-rails
- Grooved steps with a depth of 80 mm

- Large, trapeze-shaped platform (400 / 360 x 425 mm)
- 4-fold edged step-to-side-rail connection
- Conical side-rail guide for safe stance
- Two handrails for safe ascent and descent (enclosed separately)
- 'safe-cap' ladder joint
- ergo-pad® grip area with clamping mechanism
- nivello® ladder shoes with patented 2-axis inclination technology
- Practical storage tray (350 x 200 mm)
- Spreader lock with two high-strength polyester straps
- Step spacing: 235 mm
- Ladder inclination: 70°
- Maximum load: 150 kg

Scope of supply

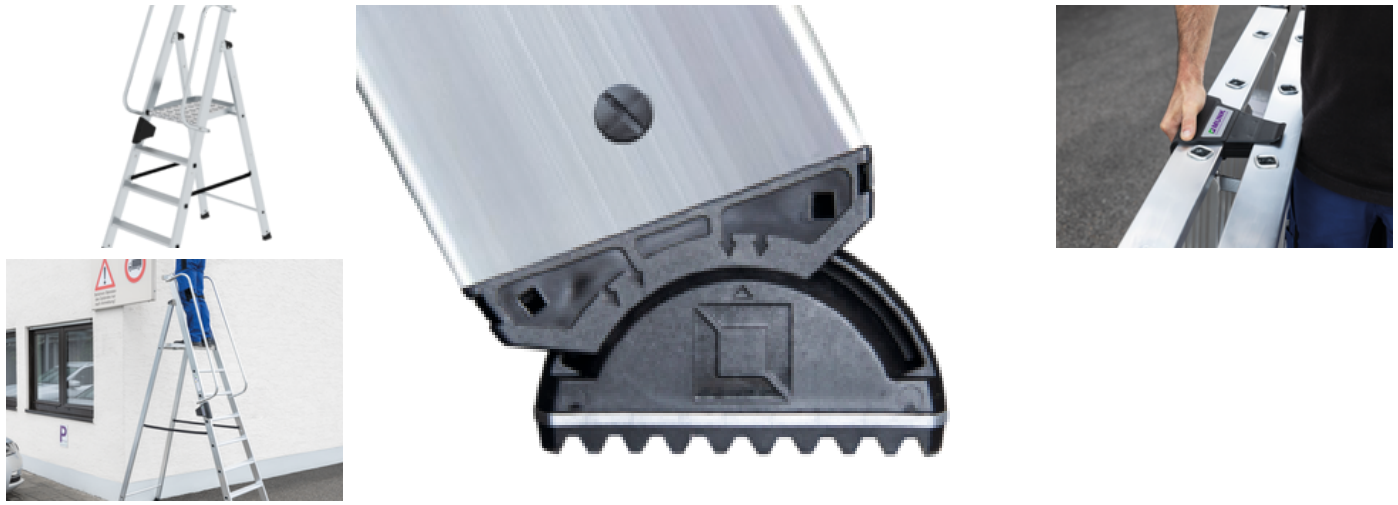
- Ladder: 1 x
- Handrail (enclosed separately): 2 x
- Assembly instructions: 1 x

Information on sustainability criteria

- Corporate certification: ISO 9001
- Corporate certification: ISO 14001
- Corporate certification: EN 1090
- Corporate certification: EcoVadis
- RoHS
- REACH
- The MUNK Group complies with a Code of Conduct
- The Supply Chain Act does not apply due to our size
- The materials used are listed in the technical specification

- Resource-saving production: own photovoltaic systems
- Energy-efficient consumption during production: LED lighting
- Repairability, durability and quality: 15-year warranty on series products made in Germany
- Recyclability: Our products are mostly made of aluminium, steel or wood and can be fed directly into the recycling process.
- Socially acceptable working conditions in production: fair wages, gender equality
- Economical and recyclable packaging: no use of polystyrene, predominantly use of wood and cardboard, small amounts of plastic
- No health hazards for the users

More product pictures



Added value

Industrial grade

Stable and robust for tough everyday working life (including 4-way edging)

- Corrosion-resistant fixtures
- Use of high-quality and high-strength materials
- Versatile and practical accessories



The movable ladder shoe sets new standards in stability

[Learn more](#)



Ladder joint safe-cap

- Smooth ladder joint with large contact surface and sturdy plastic protective cap
- The 6 rivets and thicker wall thickness provide for greater stability and protection at this sensitive point on the ladder, increasing its service life
- The safe-cap protects the ladder when in use, when loading and storing, as well as the contact surfaces, walls, truck loading areas and the joint itself



ergo-pad® grip area

For easier and more ergonomic handling at the optimum carrying point



Certificates



17KFP1725-02 -
Test Certificate
"Bauart geprüft"

Valid in



DIN EN 131-
3:2007
PAK-
ANFORDERUNG
FÜR GS -
ABSCHNITT
3.1(PAH-
REQUIREMENT
FOR GS - CL. 3.1)
AFPS GS 2014:01
PAK
EK5-AK1 17-
02:2017
DIN EN 131-1:2016
DIN EN 131-2:2017

Corporate certifications

on sustainability criteria



Management System
ISO 9001:2015
ISO 14001:2015
www.tuv.com
ID 9108612548

