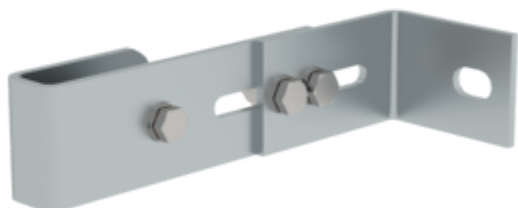


Order no.: 068250

## Wall anchor, adjustable, 165–205 mm, stainless steel



Wall clearance min [mm]

165 215 275

### Specification

Wall anchor <b>Single</b>	Wall distance min. <b>165 mm</b>	Wall distance max. <b>205 mm</b>	Adjustment range <b>40 mm</b>	Material <b>Stainless steel</b>
Weight <b>1.18 kg</b>	Transport dimensions <b>200 x 135 x 60 mm, 1.18 kg</b>	Business division <b>MUNK Günzburger Steigtechnik</b>	Order no. <b>068250</b>	Price <b>€ 69.00</b>

### Facts

- Flexible adjustment range from 215 to 275 mm
- Ideal for vertical ladders
- Adjustable wall anchor

#### Scope of supply

- Wall anchor: 1 x
- Assembly instructions: 1 x

### Information on sustainability criteria

- Corporate certification: ISO 9001
- Corporate certification: ISO 14001
- Corporate certification: EN 1090
- Corporate certification: EcoVadis
- RoHS
- REACH
- The MUNK Group complies with a Code of Conduct
- The Supply Chain Act does not apply due to our size
- The materials used are listed in the technical specification
- Resource-saving production: own photovoltaic systems
- Energy-efficient consumption during production: LED lighting
- Repairability, durability and quality: 15-year warranty on series products made in Germany
- Recyclability: Our products are mostly made of aluminium, steel or wood and can be fed directly into the recycling process.
- Socially acceptable working conditions in production: fair wages, gender equality
- Economical and recyclable packaging: no use of polystyrene, predominantly use of wood and cardboard, small amounts of plastic
- No health hazards for the users

## More product pictures

---



## Added value

---

### Optimum planning

- Practical planning aids (available as [Downloads](#)) with tips for correct planning of vertical ladder systems
- Planning in close coordination with the client as well as the place and purpose of use
- Joint project planning



All [fixed ladders / vertical ladders](#) at a glance:

- [Single-flight vertical ladders](#) in accordance with DIN 18799-1/-3, DIN 14094-1 and DIN EN ISO 14122-4 (depending on the choice of standard and the situation on site at the exit, additional components such as exit steps, railings and safety doors may be required)
- DIN 18799-1: Stationary multiple-flight vertical ladders [on buildings](#)
- DIN 14094-1: Multiple-flight [emergency ladder systems \(emergency ladders\)](#).
- DIN EN ISO 14122-4: Stationary multiple-flight vertical ladders [on machinery](#).

## Corporate certifications

---

on sustainability criteria



Management System  
ISO 9001:2015  
ISO 14001:2015  
[www.tuv.com](http://www.tuv.com)  
ID 9108612548

