



Order no.: 042703

## Single-sided stepladder 250 kg with clip-step R13



Number of steps

- 3
- 4
- 5
- 6
- 7
- 8

### Specification

|                                     |  |   |  |  |
|-------------------------------------|--|---|--|--|
| Working height<br><b>2.7 m</b>      | Step design<br><b>Steps</b>                              | Number of steps/rungs<br><b>3 steps</b> | Platform included as step<br><b>Yes</b>                  | Step depth<br><b>80 mm</b>                               |
| Step/Rung distance<br><b>235 mm</b> | Type of non-slip protection<br><b>clip-step R13</b>      | Height<br><b>1.34 m</b>                 | Platform height<br><b>670 mm</b>                         | Base spread<br><b>700 mm</b>                             |
| Inclination<br><b>70 °</b>          | Lower outer width<br><b>470 mm</b>                       | Depth of side-rails<br><b>73 mm</b>     | Depth of side-rails, support<br><b>58 mm</b>             | Width of side-rails<br><b>25 mm</b>                      |
| Max. load capacity<br><b>250 kg</b> | Design type<br><b>Freestanding   Single-sided access</b> | Weight<br><b>6 kg</b>                   | Transport dimensions<br><b>1430 x 463 x 165 mm, 6 kg</b> | Business division<br><b>MUNK Günzburger Steigtechnik</b> |
| Order no.<br><b>042703</b>          | Price<br><b>€ 252.00</b>                                 |   |  |  |

### Facts

- Stepladder made of aluminium
- Stable rectangular tube side-rails

- 80 mm deep grooved steps and large platform
- clip-step R13 step padding for certified non-slip protection
- 4-fold edged step-to-side-rail connection
- Conical side-rail guide for safe stance
- nivello® ladder shoes with patented 2-axis inclination technology
- ergo-pad® grip area with clamping mechanism
- 'safe-cap' ladder joint
- Practical storage tray with integrated hooks and tool holders
- From five steps or more: Spreader lock with two high-strength polyester straps
- Step spacing: 235 mm
- Ladder inclination: 70°
- Maximum load: 250 kg

### **Scope of supply**

- Ladder: 1 x

### **Information on sustainability criteria**

---

- Corporate certification: ISO 9001
- Corporate certification: ISO 14001
- Corporate certification: EN 1090
- Corporate certification: EcoVadis
- RoHS
- REACH
- The MUNK Group complies with a Code of Conduct
- The Supply Chain Act does not apply due to our size
- The materials used are listed in the technical specification

- Resource-saving production: own photovoltaic systems
- Energy-efficient consumption during production: LED lighting
- Repairability, durability and quality: 15-year warranty on series products made in Germany
- Recyclability: Our products are mostly made of aluminium, steel or wood and can be fed directly into the recycling process.
- Socially acceptable working conditions in production: fair wages, gender equality
- Economical and recyclable packaging: no use of polystyrene, predominantly use of wood and cardboard, small amounts of plastic
- No health hazards for the users

## More product pictures

---



## Added value

---

### Industrial grade

Stable and robust for tough everyday working life (including 4-way edging)

- Corrosion-resistant fixtures
- Use of high-quality and high-strength materials
- Versatile and practical accessories



### Ladder joint safe-cap

- Smooth ladder joint with large contact surface and sturdy plastic protective cap
- The 6 rivets and thicker wall thickness provide for greater stability and protection at this sensitive point on the ladder, increasing its service life
- The safe-cap protects the ladder when in use, when loading and storing, as well as the contact surfaces, walls, truck loading areas and the joint itself



### Storage tray

- For the practical storage of small parts
- Made from high-quality plastic
- Partly with integrated hooks and tool holders
- Different versions, depending on the ladder model



The movable ladder shoe sets new standards in stability

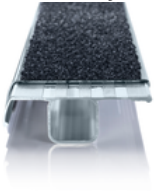
[Learn more](#)



### clip-step R 13 step padding

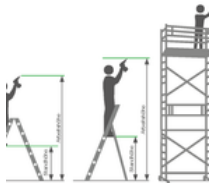
Certified non-slip protection for step ladders

- Fulfils the requirements of the highest possible non-slip class R 13 thanks to aluminium oxide particles
- Improves work safety in wet and oil-contaminated environments
- Applied up to the maximum accessible step as a visual check
- Retrofittable, available as a spare part and also in yellow in selected lengths (RAL 1021)



### Note: Working heights

- National regulations (e.g. TRBS 2121 Part 2 in Germany) must be complied with with regard to the maximum working height when using the ladder as a workstation.
- Information on [TRBS 2121 Part 2](#) has been summarised on our Service page
- Read our [tips and tricks](#) on how to calculate [working height](#)




### ergo-pad® grip area

For easier and more ergonomic handling at the optimum carrying point




## Certificates

---



16KFP1766-03 -  
Test Certificate  
"Bauart geprüft"

Valid in



DIN EN 131-  
3:2007  
EK5-AK1 17-  
02:2017  
DIN EN 131-1:2016  
DIN EN 131-2:2017  
PAK-  
ANFORDERUNG  
FÜR GS -  
ABSCHNITT  
3.1(PAH-  
REQUIREMENT  
FOR GS - CL. 3.1)  
AFPS GS 2014:01  
PAK

## Corporate certifications

---

on sustainability criteria



Management System  
ISO 9001:2015  
ISO 14001:2015  
[www.tuv.com](http://www.tuv.com)  
ID 9108612548



**Nachhaltigkeit**  
**EcoVadis**  
sustainable supply management  
CSR-Rating in Silber 2022

