

Order no.: 043803

Double-sided stepladder 250 kg with clip-step R13



Number of steps

2x3

2x4

2x5

2x6

2x7

2x8

Specification

Working height 2.2 m	Step design Steps	Number of steps/rungs 2x 3 steps	Platform included as step Yes	Step depth 80 mm
Step/Rung distance 235 mm	Type of non-slip protection clip-step R13	Height 670 mm	Inclination 70 °	Lower outer width 440 mm
Depth of side-rails 73 mm	Width of side-rails 25 mm	Max. load capacity 250 kg	Design type Freestanding Double-sided access	Weight 5 kg
Transport dimensions 740 x 433 x 200 mm, 5 kg	Business division MUNK Günzburger Steigtechnik	Order no. 043803	Price € 234.00	

Facts

- Stepladder made of aluminium
- Stable rectangular tube side-rails
- 80 mm deep grooved steps and large platform
- clip-step R13 step padding for certified non-slip protection on all accessible steps

- 4-fold edged step-to-side-rail connection
- Conical side-rail guide for safe stance
- nivello® ladder shoes with patented 2-axis inclination technology
- ergo-pad® grip area with clamping mechanism
- 4-fold bolted, solid ladder joint made of aluminium
- Spreader lock with two high-strength polyester straps
- Step spacing: 235 mm
- Ladder inclination: 70°
- Maximum load: 250 kg

Scope of supply

- Ladder: 1 x

Information on sustainability criteria

- Corporate certification: ISO 9001
- Corporate certification: ISO 14001
- Corporate certification: EN 1090
- Corporate certification: EcoVadis
- RoHS
- REACH
- The MUNK Group complies with a Code of Conduct
- The Supply Chain Act does not apply due to our size
- The materials used are listed in the technical specification
- Resource-saving production: own photovoltaic systems
- Energy-efficient consumption during production: LED lighting
- Repairability, durability and quality: 15-year warranty on series products made in Germany
- Recyclability: Our products are mostly made of aluminium, steel or wood and can be fed directly into the recycling process.

- Socially acceptable working conditions in production: fair wages, gender equality
- Economical and recyclable packaging: no use of polystyrene, predominantly use of wood and cardboard, small amounts of plastic
- No health hazards for the users

More product pictures



Added value

Industrial grade

Stable and robust for tough everyday working life (including 4-way edging)

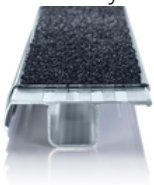
- Corrosion-resistant fixtures
- Use of high-quality and high-strength materials
- Versatile and practical accessories



clip-step R 13 step padding

Certified non-slip protection for step ladders

- Fulfils the requirements of the highest possible non-slip class R 13 thanks to aluminium oxide particles
- Improves work safety in wet and oil-contaminated environments
- Applied up to the maximum accessible step as a visual check
- Retrofittable, available as a spare part and also in yellow in selected lengths (RAL 1021)



The movable ladder shoe sets new standards in stability

[Learn more](#)



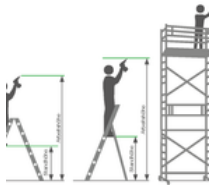
ergo-pad® grip area

For easier and more ergonomic handling at the optimum carrying point



Note: Working heights

- National regulations (e.g. TRBS 2121 Part 2 in Germany) must be complied with with regard to the maximum working height when using the ladder as a workstation.
- Information on [TRBS 2121 Part 2](#) has been summarised on our Service page
- Read our [tips and tricks](#) on how to calculate [working height](#)



Certificates

16KFP1766-03 -
Test Certificate
"Bauart geprüft"

Valid in

DIN EN 131-3:2007
EK5-AK1 17-02:2017
DIN EN 131-1:2016
DIN EN 131-2:2017
PAK-ANFORDERUNG
FÜR GS -
ABSCHNITT
3.1(PAH-
REQUIREMENT
FOR GS - CL. 3.1)
AFPS GS 2014:01
PAK

Corporate certifications

on sustainability criteria



Management System
ISO 9001:2015
ISO 14001:2015
www.tuv.com
ID 9108612548

